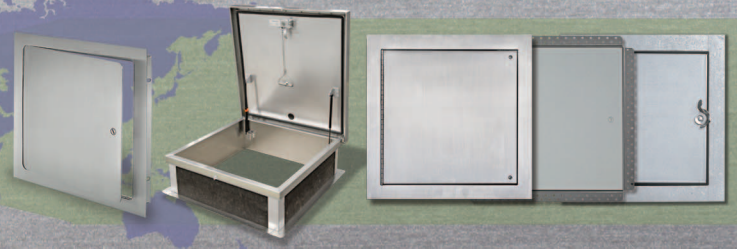




High-quality, architecturally pleasing, innovative access doors for walls, ceilings, ducts, floors and roofs



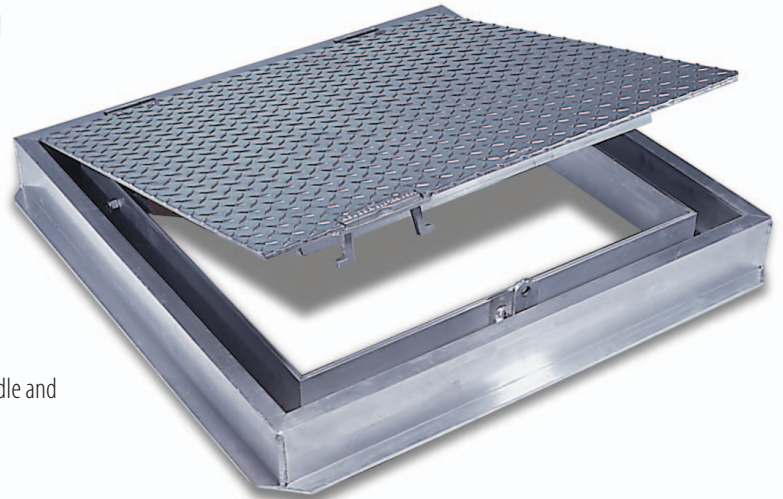
Floor Door channel Frame, H20 loading FC-H20

Application

- Designed for interior and exterior applications where watertightness is required

Product Features

- Channel frame construction with 1 1/2" drainage coupling and integral anchor flange is designed to be cast into concrete
- Diamond plate door panel is equipped with a flush aluminum drop handle and an automatic hold open arm
- Designed for off-street locations that may occasionally receive AASHTO H-20-44 wheel loads



FC-H20 Floor Door Specifications:

Material: Aluminum door and frame; stainless steel hinges and hardware

Door: 1/4" aluminum diamond plate reinforced to meet AASHTO specification H20-44 for traffic loading (16000 lb. wheel load with 30% added for impact)

Frame: Channel frame fabricated from aluminum extrusion with 1 1/2" drainage coupling and integral 1" anchor flange

Hinge: Stainless steel butt hinges with tamperproof stainless steel bolts and nuts

Opening Device: Automatic hold open arm with red vinyl grip allows door panel to open to 90 degrees, locking door in open position, and allowing for easy control when closing door panel. When required, stainless steel compression springs can be provided to add lift assistance.

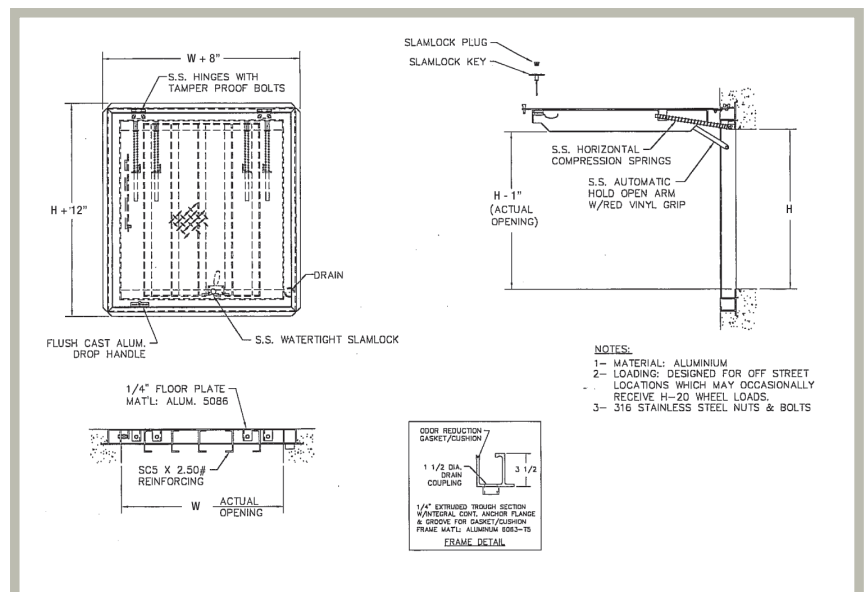
Standard Latch: Flush aluminum drop handle with stainless steel slamlock

Finish: Mill finish, with optional bituminous coating on exterior of frame

AVAILABLE SIZES (Special sizes available upon request)

NOMINAL DOOR SIZE W X H		WEIGHT PER DOOR	
inches	mm	lbs.	kg.
24 X 24	610 X 610	80	36.4
24 X 30	610 X 762	100	45.4
24 X 36	610 X 914	110	49.9
30 X 30	762 X 762	110	49.9
30 X 36	762 X 914	125	56.8
36 X 36	914 X 914	140	63.6
36 X 48	914 X 1220	160	72.6
42 X 42	1067 X 1067	170	77.2
48 X 48*	1220 X 1220	240	109
48 X 72*	1220 X 1829	345	156.6
60 X 60*	1524 X 1524	380	172.5

*Double Leaf



For detailed specifications see submittal sheet