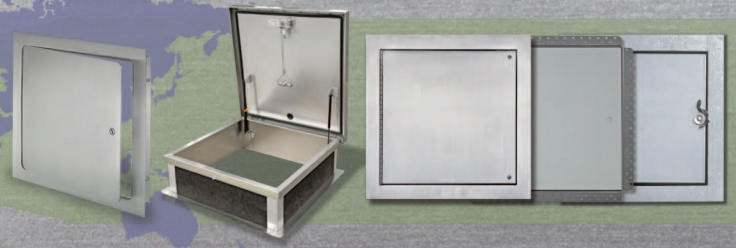




High-quality, architecturally pleasing, innovative access doors for walls, ceilings, ducts, floors and roofs



# Floor Door H20 loading FA-H20

## Application

- Designed for interior and exterior applications where watertightness is not required

## Product Features

- Angle frame construction with integral anchor flange is designed to be cast into concrete
- Diamond plate door panel is equipped with a flush aluminum drop handle and an automatic hold open arm, along with st/stl compression spring & st/stl slamlock
- Designed for off-street locations that may occasionally receive AASHTO H-20-44 wheel loads

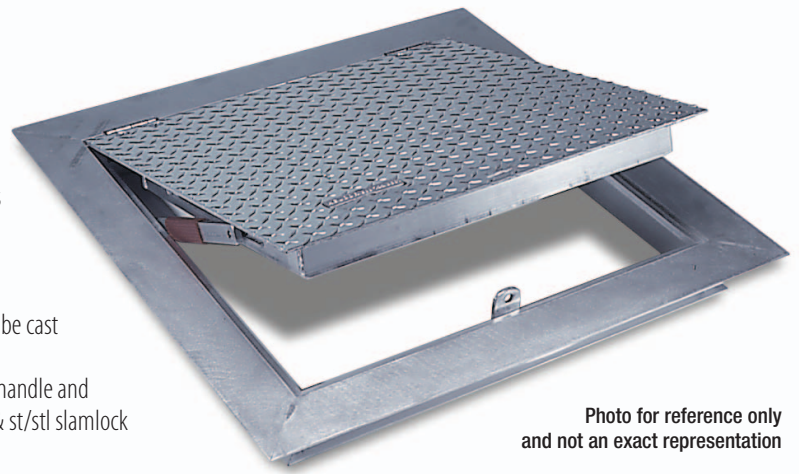


Photo for reference only and not an exact representation

## FA-H20 Floor Door Specifications:

**Material:** Aluminum door and frame; stainless steel hinges and hardware

**Door:** 1/4" aluminum diamond plate reinforced to meet AASHTO specification H20-44 for traffic loading (16000 lb. wheel load with 30% added for impact)

**Hinge:** Stainless steel butt hinges with tamperproof stainless steel bolts and nuts

**Frame:** Angle frame fabricated from aluminum extrusion with an integral 1" anchor flange

**Opening Device:** Automatic hold open arm with red vinyl grip allows door panel to open to 90 degrees, locking door in open position, and allowing for easy control when closing door panel. Stainless steel compression springs are provided to add lift assistance.

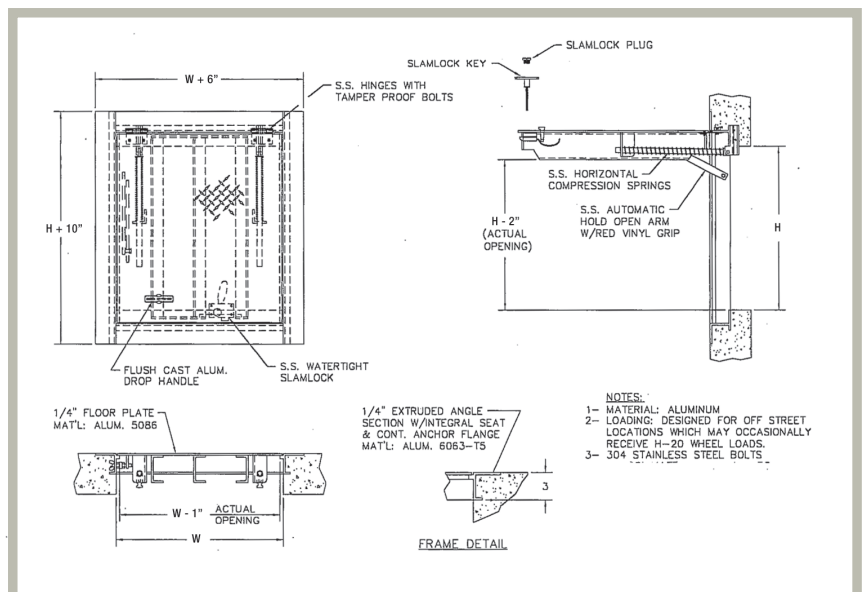
**Standard Latch:** Flush aluminum drop handle with st/stl slamlock

**Finish:** Mill finish, with optional bituminous coating on exterior of frame

## AVAILABLE SIZES (Special sizes available upon request)

NOMINAL DOOR SIZE W X H		WEIGHT PER DOOR	
inches	mm	lbs.	kg.
24 X 24	610 X 610	55	25
24 X 30	610 X 762	65	29.5
24 X 36	610 X 914	75	34
30 X 30	762 X 762	80	36.4
30 X 48	762 X 1220	125	56.8
36 X 36	914 X 914	110	49.9
36 X 48	914 X 1220	150	68.1
42 X 42	1067 X 1067	170	77.2
48 X 48*	1220 X 1220	200	90.8
48 X 72*	1220 X 1829	295	133.9
60 X 60*	1524 X 1524	330	149.8

\*Double Leaf



For detailed specifications see submittal sheet

For more information on Acudor International visit [www.acudor.com](http://www.acudor.com) or call 800.277.6897 or outside of North America 905.428.2240

Product specifications may change without notice. Acudor is a registered Trade Mark ©2010